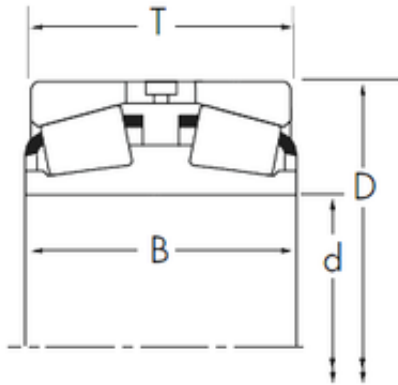




AMERICAN BEARING MFG.CORP.

42,862 mm x 90,119 mm x 52,375 mm Timken
358D/352 tapered roller bearings



Bearing No. 358D/352

Size	42.862x90.119x54.991 mm
Bore Diameter	42,862 mm
Outer Diameter	90,119 mm
Width	54,991 mm
d	42,862 mm
D	90,119 mm
T	54,991 mm
B	52,375 mm
R	1,5 mm
r	2,3 mm

358D/352 Bearing 2D drawings and 3D CAD models