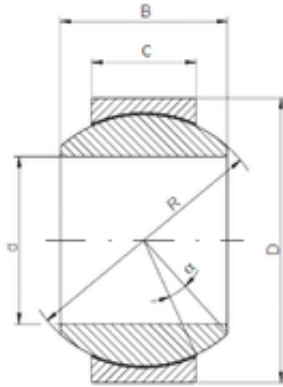




AMERICAN BEARING MFG.CORP.

20 mm x 42 mm x 25 mm ISO GE 020 HCR
plain bearings



Bearing No. GE 020 HCR

Size	20x42x25 mm
Bore Diameter	20 mm
Outer Diameter	42 mm
Width	25 mm
d	20 mm
D	42 mm
B	25 mm
C	16 mm
R	35,5 mm
Angle	17 °

GE 020 HCR Bearing 2D drawings and 3D CAD models